



Spinlock IRC Welsh Championship

17th to 19th August Pwllheli

Incorporating the Cardigan Bay Regatta

For Spinlock IRC, Sports boat IRC and NHC Corinthian
classes, Cruisers, and Small Keelboats (under 26ft)



Sailing Instructions

1. RULES

- 1.1. The regatta will be governed by the rules as defined in *The Racing Rules of Sailing*
- 1.2. Spinlock IRC rules part A, B & C shall apply to Spinlock IRC racing.
- 1.3. Handicapping by RYA National Handicap for Cruisers (NHC) Regatta series shall apply.

2. NOTICES TO COMPETITORS

- 2.1. Notices to competitors will be posted on the official notice board(s) located at Plas Heli for the Pwllheli fleets.
- 2.2. All communications between competitors and the race committee or classes 1 and 2 on the water shall be on the VHF channel 37. The Call sign of the Race Committee for all such communications is RC Fleet 1, RC Fleet 2. Communication for small keelboats and cruisers to be on channel 17 with call sign for the committee for these two groups as "Pwllheli Bridge".
- 2.3. In case of difficulty with transmissions on the relevant VHF channel. VHF channel 72 will be used as an alternative channel. Flag '3rd Substitute' will be flown from the race committee boat(s) to indicate this change.
- 2.4. If a red flag is displayed by the race committee boat(s), which may be repeated on support boats (ribs) & accompanied by repetitive sound signals, a boat is blocking the working VHF channel. Please check your VHF PTT (Transmit) buttons.

3. CHANGES TO SAILING INSTRUCTIONS

- 3.1. Any change to the sailing instructions will be posted two hours before any race to which it applies, except that any change to the schedule of races will be posted by 2000 on the day before it will take effect.
- 3.2. Amendments made afloat will be signalled by the display of flag W with three sound signals. A patrol boat may communicate these either verbally or in writing.

4. SIGNALS MADE ASHORE

- 4.1. Signals made ashore will be displayed at the flagpole outside Plas Heli for the Pwllheli Fleets.
- 4.2. When flag AP is displayed ashore, '1 minute' is replaced with 'not less than 45 minutes' in the race signal AP.



5. SCHEDULE OF RACES

- 5.1. Dates of racing: 17th August to 19th August.
5.2. Number of races: Pwllheli

Class	Number	Max Races per Day
1 and 2 including IRC sports boats	9	3,4,4
Small Keelboat, Cruisers	6	3,3,3
Note:		
It is intended to hold a Coastal Race.		
One extra race per day may be sailed, provided that no class becomes more than one race ahead of schedule and the change is made according to instruction 3		

- 5.3. The scheduled time of the warning signal for the first race each day is 1055.
5.4. To alert boats that a race or sequence of races will begin soon, the orange starting line flag will be displayed with one sound at least five minutes before a warning signal is made.
5.5. On the last day of the regatta no warning sequence will commence after 1425.
5.6. A long distance Race may be held on Friday or Saturday, if this race is run, then there will be a maximum of two races only on this day and the Long Distance Race result is none discardable.

6. CLASS FLAGS

Class flags will be:

Class	Fleet Flag
1	Numeral 1
2	Numeral 2
Cruiser	Numeral 7
Small Keelboat	Numeral 3

It is intended to start Class 1 and then 2, afloat, others off the psc line.
It is intended that IRC numbers 1.000 and above will be class 1 and less than 1.000 Class 2 including Keelboats and sports boats, unless otherwise stated on the notice board.
Please check Class Flags as the order may not be followed to assist race management.

7. RACING AREAS

- 7.1. Cardigan Bay.
7.2. When on station the Signal Vessel may broadcast its position on the designated VHF Channel.

8. THE COURSES PWLLHELI IRC 1/2

- 8.1. The diagrams in Addendum A show the courses, including the approximate angles between legs, the order in which marks are to be passed, and the side on which each mark is to be left.



- 8.2. No later than the warning signal, the race committee signal boat may display the approximate compass bearing of the first leg.
- 8.3. If additional races are to be sailed this will be signalled by the display of Flag G at the finish of the last Scheduled Race.
- 8.4. The course to be sailed will be displayed on the committee boat for Addendum A courses. But see 8.7.
- 8.5. **Round The Cans:** The course to be sailed will be notified on the VHF Channel for the relevant Fleet.
- 8.6. The course to be sailed will be announced by the relevant committee boat using the call signs described on VHF. The list of rounding marks and the finishing mark, each identified by number (or letter), together with their required side will be announced on VHF. There will be no visual course signals. The marks shall be rounded in the order announced. The list of marks and their identifying numbers and positions are shown on the separate Course Marks Addendum. There may be an additional Black inflatable mark positioned to windward of the start (between 1 and 1.5 miles) this will be passed as described on the VHF course announcement.
- 8.7. **Important information:** For Fleets 1 and 2 if no course is signalled then the first start will be OX2 and the second IX2.

9. Courses Pwllheli Small Keelboat/Cruiser - white sail

- 9.1 **Fixed Course** will be displayed on the CHPSC Bridge. Courses 1 to 68 are available in the CHPSC 2018 Racing Pack or CHPSC web page. Courses 70 to 99 (if used) will be posted on the official notice board and may be repeated on the CHPSC Web page. A multiplier number, (black on a white background) may follow indicating all marks to be repeated.
- 9.2 **Variable course.** The course will be displayed on the CHPSC Bridge using numbers with a red or green background denoting whether a mark is to be passed to port or starboard respectively. A multiplier number, (black on a white background) may follow indicating all marks to be repeated.

10. MARKS PWLLHELI

- 10.1. Marks 1, 2, 3, 4S and 4P will be Inflatable Red Dumpy buoys Mark 5 will be a yellow inflatable Dumpy Mark.
- 10.2. New marks, as provided in instruction 12.1, will be Black triangular buoys.
- 10.3. The starting marks will be a boat (or and orange mark) and an orange mark and finishing marks will be a boat and a blue mark. If the starting line is composed of two orange marks, there will be a signal boat in attendance to give the race signals.
- 10.4. Committee boat guard marks shall be Black Triangular.
- 10.5. A race committee boat signalling a change of a leg of the course is a mark as provided in instruction 12.1.
- 10.6. If one of two gate marks is missing and has not been replaced as described in RRS 34 then the remaining mark shall be rounded to port.
- 10.7. Round the Cans Courses
- 10.8. The references and approximate positions of the marks are shown on the Course Card.

11. THE START

- 11.1. Races will be started by using rule 26 with the warning signal made 5 minutes before the starting signal.
- 11.2. The starting line will be between a staff displaying orange flag on a committee boat or and orange buoy at the starboard end and the course side of the port end starting mark. This means the signal boat may be separate from the line (likely if anchoring hazardous).



- 11.3 **Cruiser, Small Keelboat:** The Start Line is a transit of the orange pole on the CHPSC Bridge, a white mast with an orange top section on the foreshore and the ODM (mark O). The seaward end of the line is bounded by an ODM (mark O). The shore end may be bounded by an IDM. Boats shall pass between these marks (when both are present), in the direction of the first mark of the course, to start.
- 11.4 Boats whose warning signal has not been made shall avoid the starting area during the starting sequence for other races.
- 11.5A boat starting later than 4 minutes after her starting signal will be scored Did Not Start without a hearing. This changes rule A4 & A5.
- 11.6 If any part of a boat's hull, crew or equipment is on the course side of the starting line during the two minutes before her starting signal and she is identified, the race committee will attempt to broadcast her sail number on VHF channel 37. Failure to make a broadcast or to time it accurately will not be grounds for a request for redress. This changes rule 62.1(a).

12 CHANGE OF THE NEXT LEG OF THE COURSE

- 12.1 To change the next leg of the course, the race committee will lay a new mark (or move the finishing line) and remove the original mark as soon as practicable. When in a subsequent change a new mark is replaced, it will be replaced by an original mark.
- 12.2 Except at a gate, boats shall pass between the race committee boat signalling the change of the next leg and the nearby mark, leaving the mark to port and the race committee boat to starboard. This changes rule 28.
- 12.3 **Shorten Course: Afloat.** Any course may be shortened at any mark. In addition, when a finishing line described in SI 13 has been laid to leeward or in the vicinity of the intended leeward mark, and when flag S is displayed with two sound signals from the finishing boat the meaning of flag S is changed to the course is changed, and the intended leeward mark(s) is/are the last mark of the course. Pass the mark to port or if a gate sail between the gate marks from the direction of the previous mark and proceed through the finishing line. (Class flags will be used if not all classes are finishing). Additional sound signals may be given, and/or a rib may wave a blue flag at competitors in the vicinity of mark 3 to draw boats attention to the changed course (at the Race Officers discretion).

13 THE FINISH

- 13.1 The finishing line will be between a staff displaying a blue flag on the finishing mark at the starboard end and the course side of the (Blue) port-end finishing mark.
- 13.2 The finish line shall be the transit between the Pwllheli Fairway Buoy and the Bridge at Plas Heli the Welsh National Sailing Academy and Events Centre with a bearing of 297deg magnetic or a back bearing to the Fairway of 117deg magnetic (see chart below).
- 13.3 13.2. Pwllheli Fairway Buoy (Iso.2s) located N52 53.000 W4 22.900
13.3. Plas Heli Bridge located - N52 53.336 W4 24.230
- 13.4 Please note this is not the usual line used as the start in Pwllheli.
- 13.5 **Small Keelboat/Cruiser**
The finish will be between the white stripe on the CHPSC Bridge widow and the ODM. Unless informed on VHF it will be 13.2 above.
- 13.6 **Shortening of course** will be in accordance with RRS32. In addition, amending RRS32, the course may be shortened at any mark, signaled by two sound signals and Flag S (from CHPSC Bridge) as the first boat approaches the last mark intended to be rounded. The fleet will then proceed after rounding the mark to the CHPSC Usual Finishing Line (defined above) which will be crossed from the course direction. The Race Officer may announce his intention to shorten course on VHF Channel 17. Alternatively, a course may be shortened at a mark/turn point at some point on the course, if directed by the race officer on the radio, all boats should record their finish/mark rounding time.

14 Spare number

14.1

15 TIME LIMITS AND TARGET TIMES

15.1 Time limits are as follows:

Class	Time limit
1 and 2	2.5 hrs (Does not apply to the Coastal Race which is 6 hrs).
Cruiser	2.5 hrs
Small Keelboat	2.0 hrs

15.2 Boats failing to finish within 30 (1hr for coastal race) after the first boat sails the course and finishes will be scored Did Not Finish without a hearing. This changes rules 35, A4 and A5.

16 PROTESTS AND REQUESTS FOR REDRESS

16.1 Protest forms are available at the race office, located at PSC. Protests and requests for redress or reopening shall be delivered there within the appropriate time limit.

16.2 For each class, the protest time limit is 90 minutes after the last boat has finished the last race of the day or the race committee signals no more racing today, whichever is later.

16.3 Notices will be posted no later than 30 minutes after the protest time limit to inform competitors of hearings in which they are parties or named as witnesses. Hearings will be held in the protest room, located at PSC, beginning at the time posted.

16.4 Notices of protests by the race committee or protest committee will be posted to inform boats under rule 61.1(b).

16.5 Breaches of instructions 11.3, 18.1, 19.1, 20, 23, and 24, will not be grounds for a protest by a boat. This changes rule 60.1(a). Penalties for these breaches may be less than disqualification if the protest committee so decides.

16.6 On the last scheduled day of racing a request for reopening a hearing shall be delivered

- (a) within the protest time limit if the requesting party was informed of the decision on the previous day;
- (b) no later than 30 minutes after the requesting party was informed of the decision on that day.

This changes rule 66.

16.7 On the last scheduled day of racing a request for redress based on a protest committee decision shall be delivered no later than 30 minutes after the decision was posted. This changes rule 62.2.

16.8 The Exoneration Penalty and the Advisory Hearing and RYA Arbitration procedures of the RYA Rules Disputes Procedures will be available. Decisions from RYA Arbitration can be referred to a protest committee but cannot be reopened or appealed. See the Official Notice Board for details.

17 SCORING

17.1 **Class 1 and 2**

17.2 Two races are required to be completed to constitute a series.



- (a) When fewer than 6 races have been completed, a boat's score will be the total of her race scores.
- (b) When 6 or more races have been completed, a boat's series score will be the total of her race scores excluding her worst score. The Long distance Race cannot be discarded.

17.5 **SMALL KEELBOATS:** Two races are required for a series, there will be one discard after 5 races are completed.

17.6 **CRUISER:** All Races to count, one race to be required for a series.

18 SAFETY REGULATIONS

18.1 A boat that retires from a race shall notify the race committee as soon as possible.

19 REPLACEMENT OF CREW OR EQUIPMENT

19.1 Substitution of competitors will not be allowed without prior written approval of the race committee.

20 EVENT ADVERTISING

20.1 Boats shall display event advertising supplied by the organizing authority as supplied.

21 PRIZES

21.1 Prizes will be given as described in the Notice of Race, additional prizes may be awarded.

21.2 Sports boats will sail with class 1 and/or 2 dependant on rating but will have a separate prize.

22 DISCLAIMER OF LIABILITY

Risk Statement

RRS Rule 4 of the Racing Rules of Sailing states: "The responsibility for a boat's decision to participate in a race or to continue racing is hers alone."

Sailing is by its nature an unpredictable sport and therefore inherently involves an element of risk. By taking part in the event, each competitor agrees and acknowledges that:

- a) They are aware of the inherent element of risk involved in the sport and accept responsibility for the exposure of themselves, their crew and their boat to such inherent risk whilst taking part in the event;
- b) They are responsible for the safety of themselves, their crew, their boat and their other property whether afloat or ashore;
- c) They accept responsibility for any injury, damage or loss to the extent caused by their own actions or omission;
- d) Their boat is in good order, equipped to sail in the event and they are fit to participate;
- e) The provision of a race management team, patrol boats and other officials and volunteers by the event organiser does not relieve them of their own responsibilities;
- f) The provision of patrol boat cover is limited to such assistance, particularly in extreme weather conditions, as can be practically provided in the circumstances;
- g) It is their responsibility to familiarise themselves with any risks specific to this venue or this event drawn to their attention in any rules and information produced for the venue or event and to attend any safety briefing held for the event.
- h) They are responsible for ensuring that their boat is equipped and seaworthy so as to be able to face extremes of weather; that there is a crew sufficient in number, experience and fitness to withstand such weather; and that the safety equipment is properly maintained, stowed and in date and is familiar to the crew.

23 INSURANCE

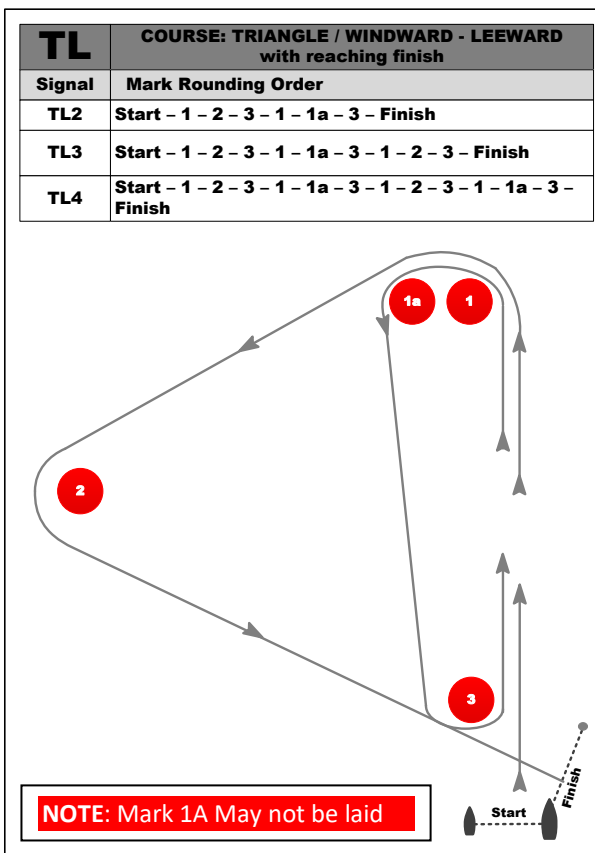
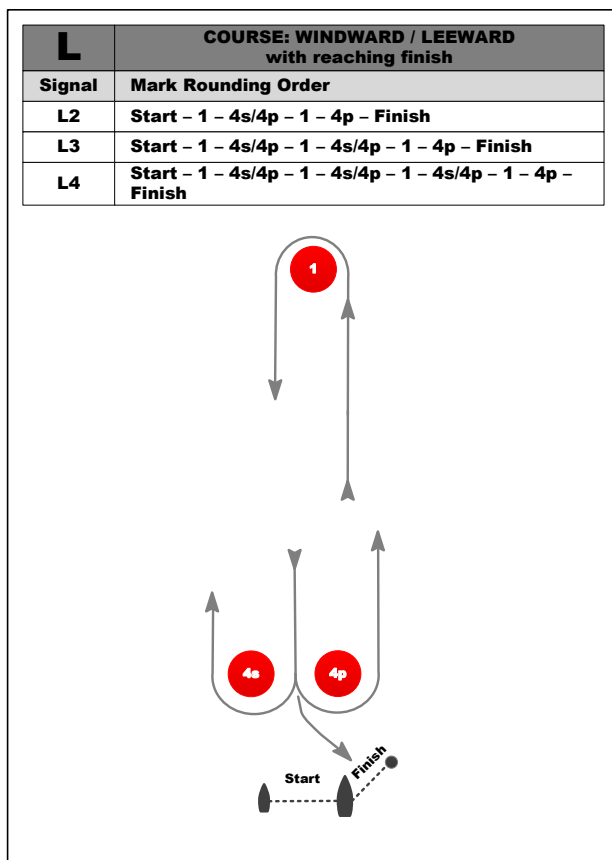
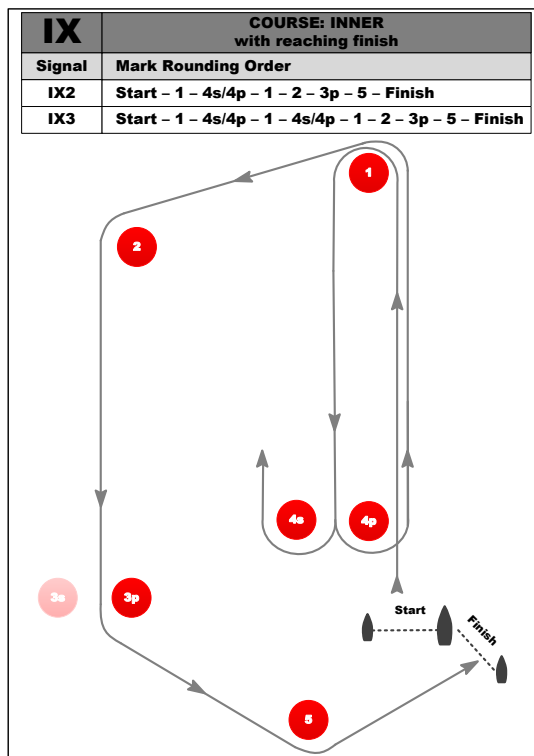
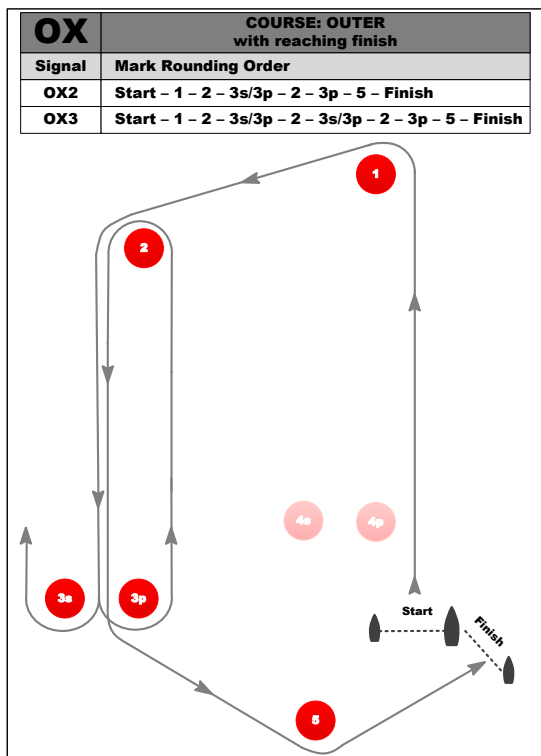
- 23.1 Each participating boat shall be insured with valid and adequate third-party liability insurance per incident.

NEW PWLLHELI ALTERNATIVE RACE FINISH LINE

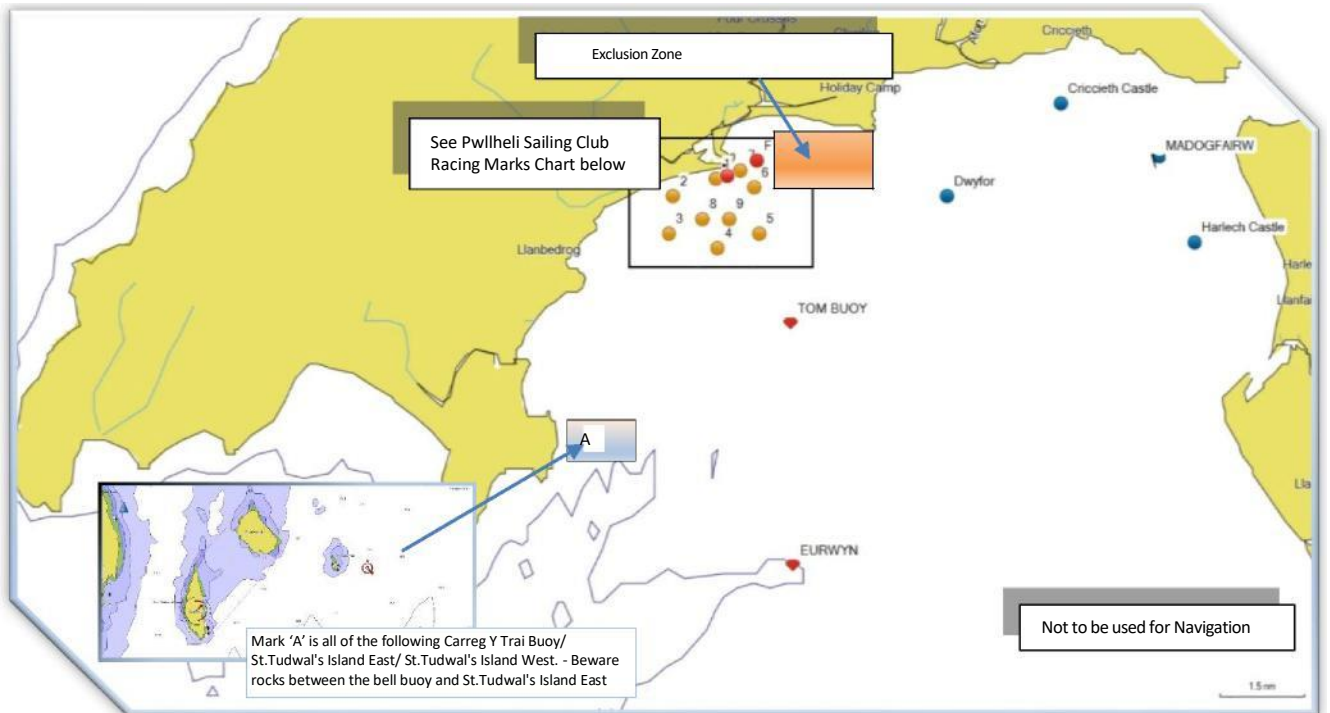


Addendum A Course

Description

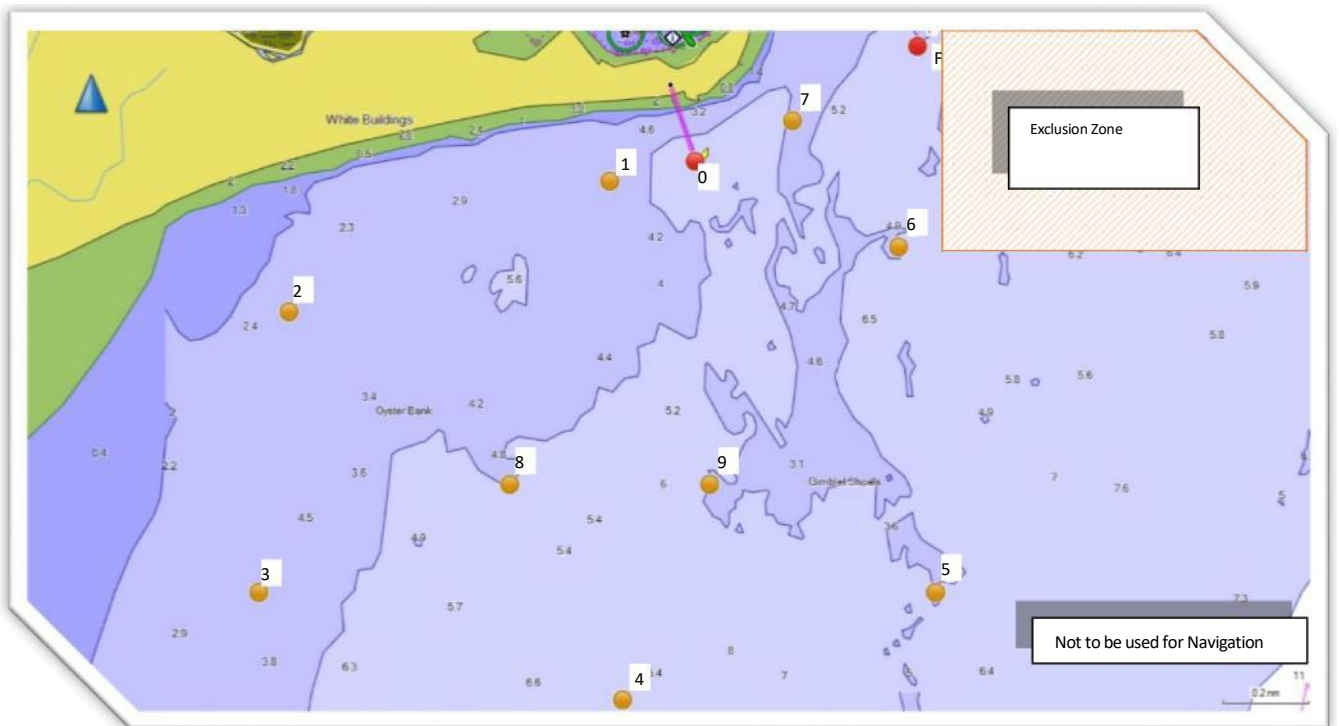


For Round the Cans Racing see:-
Coastal Race Addendum P1



Addendum P2 chart.

Pwllheli SC Race Mark Location chart





Approximate Position of Racing Marks for 2018 IRC Championship

Position given as hddd° mm.mmm'

Mark No.	Description/Sponsor		Latitude	Longitude	Buoy	Top Mark
O	Outer Distance Mark (Welsh Water)		52° 52.747'N	04° 23.960'W	Large Yellow Barrel	
1	West Turning Mark		52° 52.700'N	04° 24.300'W	Large Barrel	Yellow Spherical
2	West End - Clwb Hwyllo Pwllheli		52° 52.400'N	04° 25.580'W	Large Barrel	Yellow Spherical
3			52° 51.750'N	04° 25.700'W	Large Barrel	Yellow Spherical
4			52° 51.500'N	04° 24.250'W	Large Barrel	Yellow Spherical
5			52° 51.750'N	04° 23.000'W	Large Barrel	Yellow Spherical
6			52° 52.550'N	04° 23.150'W	Large Barrel	Yellow Spherical
7	East Turning Mark		52° 52.840'N	04° 23.570'W	Large Barrel	Yellow Spherical
8			52° 52.000'N	04° 24.700'W		
9			52° 52.000'N	04° 23.900'W	Large Barrel	Red Spherical
10			52° 53.375'N	04° 20.913'W	Large Barrel	Red Spherical
F	Pwllheli Fairway		52° 53.000'N	04° 23.000'W	Red & White striped	
IDM	Inner Distance Mark		52° 52.850'N	04° 24.053'W		
C	Causeway		52° 41.210'N	04° 25.330'W	Westerly Cardinal Buoy	
D	Dwyfor		52° 52.400'N	04° 17.400'W	Inflatable Racing Mark	
E	Eurwyn	#	52° 47.000'N	04° 22.000'W	Yellow Buoy	X
T	Tom Buoy	#	52° 50.200'N	04° 22.700'W	Yellow Can	
HC	Harlech Castle		52° 51.600'N	04° 10.000'W	Inflatable Racing Mark	
CC	Criccieth Castle		52° 54.000'N	04° 14.000'W	Inflatable Racing Mark	
M	Madog Fairway	#	52° 52.970'N	04° 11.180'W	Red & White striped	
Y	Gull Islands		Yachts must not pass between the two islands. (see Admiralty Chart 1971)			
A	Carreg Y Trai Buoy/ St.Tudwal's Island East/ St.Tudwal's Island West.				Beware rocks between the bell buoy and St.Tudwal's Island East	

Last known Position - please check Official PSC Notice Board for any corrections.



